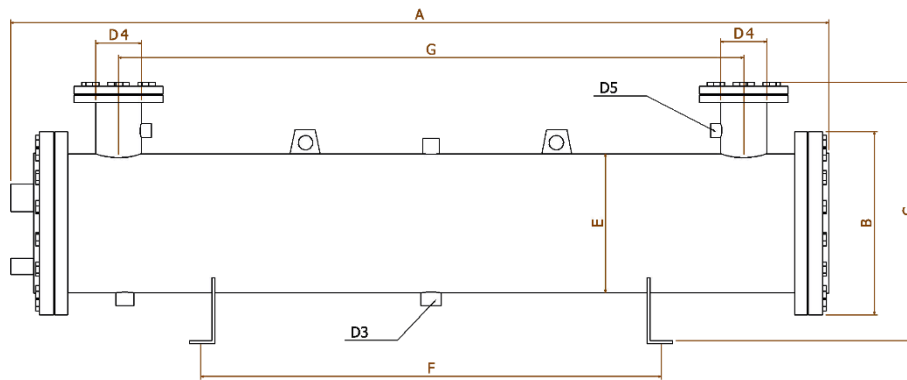
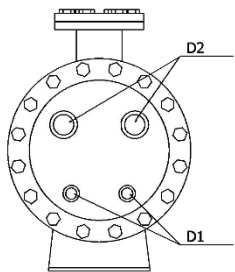
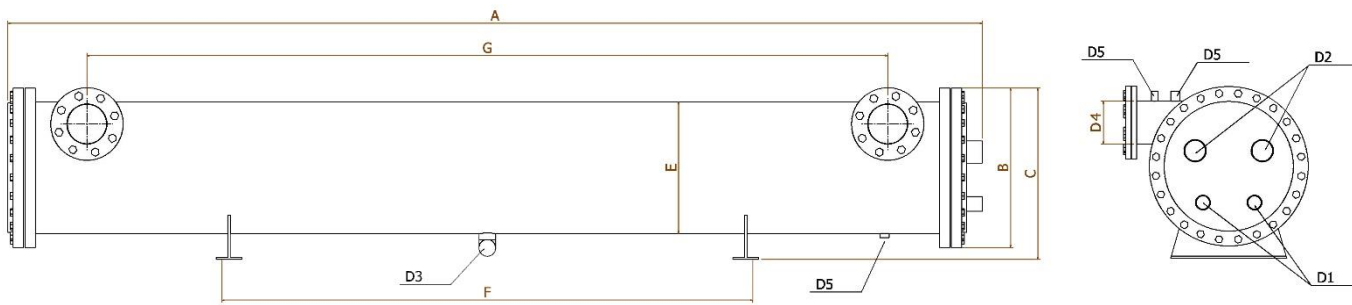


MODEL	KW	A	B	C	E	F	G	D1	D2	D3	D4	D5	Q	Vm
		cm	cm	cm	mm	cm	cm	inch	inch	inch	inch		M3/h	lit
EWB20T	60	170	36	55	273	90	124	7/8	1 3/8	3/4	2/5	4*1/2	11	52
EWB25T	75	170	36	55	273	90	124	1 1/8	1 3/8	1	3	4*1/2	13	47
EWB30T	88	220	36	55	273	125	174	1 1/8	1 5/8	1	3	4*1/2	16.5	65
EWB40T	126	220	41	60	323	125	174	1 1/8	2 1/8	1	3	4*1/2	22.5	98
EWB50T	150	220	41	60	323	125	174	1 1/8	2 1/8	1	3	4*1/2	28	87
EWB60T	170	220	51	60	406	125	170	1 1/8	2 1/8	1	4	5*1/2	32.5	149
EWB70T	205	220	51	60	406	125	170	1 1/8	2 1/8	1	4	5*1/2	38	137
EWB80T	253	220	51	65	406	125	170	1 3/8	2 1/8	1/5	4	5*1/2	43	171
EWB90T	275	220	56	65	457	125	170	1 5/8	2 1/8	2	5	5*1/2	47	145



Water.T	12 °C	7 °C
EVA.T	5 °C	
Fouling	0.000043 m2k/w	
velocity	1.3 ~ 3 m/s	
Testing pressure	290 psi	20 bar
Vm	shell volume	حجم خالص پوسته
Q	Water Flow rate	دبی آب
D5	connections	اتصالات

MODEL	KW	A	B	C	E	F	G	D1	D2	D3	D4	D5	Q	Vm
		cm	cm	cm	mm	cm	cm	inch	inch	inch	inch	inch	M3/h	lit
EWB100T	310	320	46	60	406	200	27	1 5/8	2 1/8	1 1/2	5	1&1/2	54	232
EWB120T	346	320	46	60	406	200	27	1 5/8	3 1/8	1 1/2	5	1&1/2	65	208
EWB140T	423	320	56	60	457	200	27	2 1/8	3 1/8	2	6	1&1/2	75.5	275
EWB160T	450	320	56	65	457	200	27	2 1/8	3 1/8	2	6	1&1/2	86.5	251
EWB180T	533	320	61	65	508	200	26	2 1/8	3 1/8	2 1/2	6	1&1/2	93.5	338
EWB200T	600	320	61	65	508	200	26	2 1/8	3 1/8	2 1/2	8	1&1/2	104.5	314



Water.T	12 °C	7 °C
EVA.T	5 °C	
Fouling	0.000043 m2k/w	
velocity	1.3 ~ 3 m/s	
Testing pressure	290 psi	20 bar
Vm	shell volume	حجم خالص پوسته
Q	Water Flow rate	دبی آب
D5	connections	اتصالات

